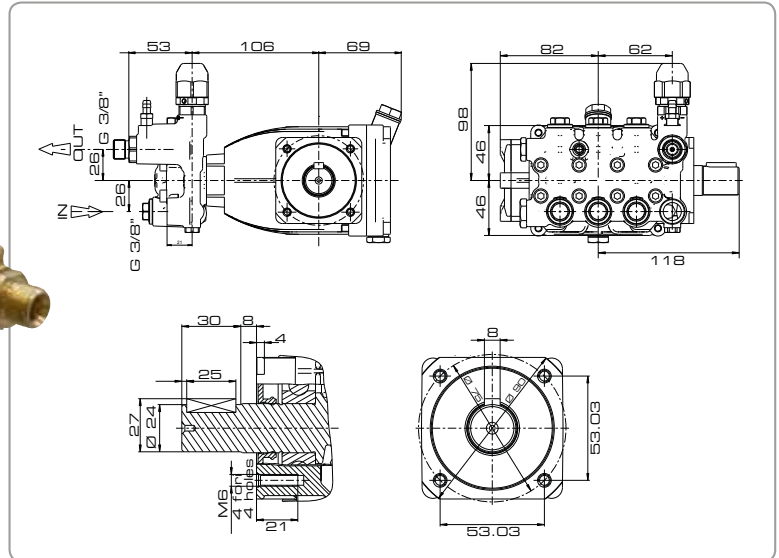


High-pressure pumps units

CL4 series

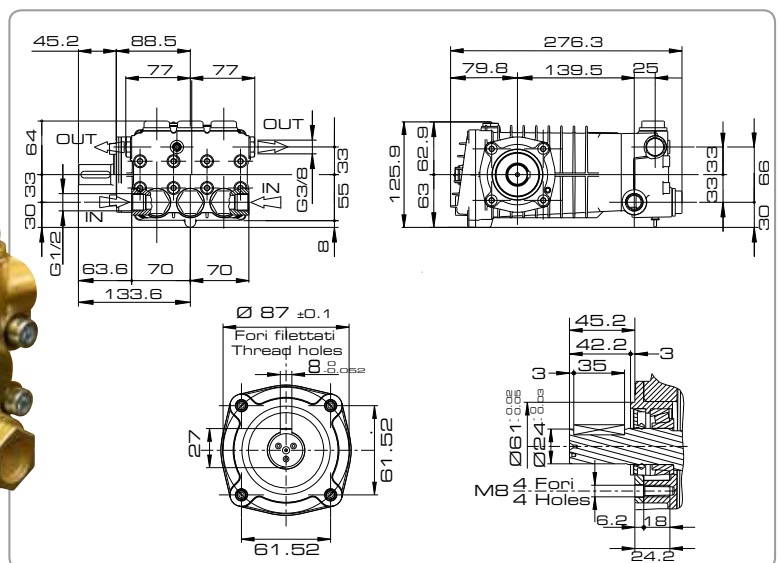


Equipped with:

- Pressure adjuster included

Model	Right shaft ver.		Left shaft ver.		Max. pressure			Flow rate		Requested power				Weight		
	Code	Code	RPM	bar	psi	MPa	l/m	GPM	HP	kW	kg	lbs				
CL 44-15 9-200	5.702.0018	5.702.0019	1450	200	2900	20	9	11	2.4	2.9	4,9	6	3,6	4,4	6,6	14,5
CL 44-15 11-200	5.702.0020	5.702.0021	1450	200	2900	20	11	13	2.9	3.5	6	6,5	4,4	4,8	6,6	14,5
CL 44-18 15-200	5.703.0006	5.703.0007	1450	200	2900	20	15	18	4	4.7	7,5	9,2	5,5	6,9	7	15,4

CL5 series



Model	Right shaft ver.		Left shaft ver.		Max. pressure			Flow rate		Requested power				Weight		
	Code	Code	RPM	bar	psi	MPa	l/m	GPM	HP	kW	kg	lbs				
CL 54-20 11-200	6.605.0183	6.605.0184	1450 1750	200	2900	20	11	13	2.9	3.5	6	6,5	4,4	4,8	9,8	21,6
CL 54-20 15-200	6.605.0185	6.605.0186	1450 1750	200	2900	20	15	18	4	4.7	7,5	9,2	5,5	6,9	9,8	21,6
CL 54-20 21-200	6.605.0187	6.605.0188	1450 1750	200	2900	20	21	25	5.5	6.6	10,5	12,8	7,7	9,5	9,8	21,6